

For Sale

Our home in Flower Mound, TX

3405 North Drive

8.5 miles NW of DFW Airport including a complete World Class
amateur radio station with 2 towers a tower radio hut and
antennas from 160M thru 70CM

3700 Sq ft home with large pool on 3.8 wooded acres
1800 Sq ft guest house and shop
Property adjoins 300 acres of Army Corp land with hiking trails

For technical or general information

Pat Walls

K7PW

Cell: 817-368-6592

Web: www.k7pw.me

Email: info@tex-mark.com

Expect Listing around mid May

**FOR A COMPLETE SLIDE
PRESENTATION, GO TO:
WWW.K7PW.ME AND CLICK
YELLOW SCROLL**

Page Up/Page down to scroll

Part 1

K7PW...A World Class Station



3405 North Drive
Flower Mound, Texas



K7PW...A World Class Station

W5RPQ was commissioned at this location in April of 1987 with a shiny new 80' Rohn 25 tower, an explorer 14 triband with the 40M driven element extension. On top of this was a pair of stacked 16 element 2 meter vertical beams and at the top a 3 element WARC beam. Over the years, many versions of monopoles and smaller beams up to 920MHz have graced this mast in support of about nearly every mode of transmission with the exception of moon bounce and satellite communications. A second tower was erected in 1990, a 44' tilt-over crank up to support APRS scanners and weather instrumentation.

This call was traded in for my current call sign K7PW in January of 1997 commensurate with passing my Extra class examination. This also included a new Kenwood TS-950S transceiver with matching band scope and speaker. While this rig has some age, it has not been over used. It's DSP features and solid 150 watt output still matches the performance of many of the new rigs available.

We have just put our home on the market and I would like to see the complete station indoors and out sold with it to a very fortunate radio operator. As you will see in this presentation, this is a one of a kind acreage with direct access to 300 acres of hiking and horse trails around lake Grapevine.

K7PW...A World Class Station

A view from above



K7PW...A World Class Station

A closer look



Main residence
3688 sq ft

Guest House 900 sq ft
over shop 900sqft

K7PW...A World Class Station

A view of the 80 ' Rohn tower and
radio hut from in front of the house.
(220' apart)



K7PW...A World Class Station

Remodeled Hut including 1,100' of new LMR 600 coax from tower to hut to house



K7PW...A World Class Station

New surge arrestors and coax



K7PW...A World Class Station

Looking ESE toward the
creek and Army Corp
land about 400' ahead.



K7PW...A World Class Station

A height perspective. The trees
around the tower are 40' to 45' Tall



K7PW...A World Class Station

A view from 80' in the air



K7PW...A World Class Station

US Steel 44' tilt-over crank up tower



K7PW...A World Class Station

Frequent visitors (not at all tame by the way)



K7PW...A World Class Station

Home, a winter perspective



K7PW...A World Class Station

A winter sunrise



K7PW...A World Class Station

The Cul-de-sac is iced in...a stay at home day



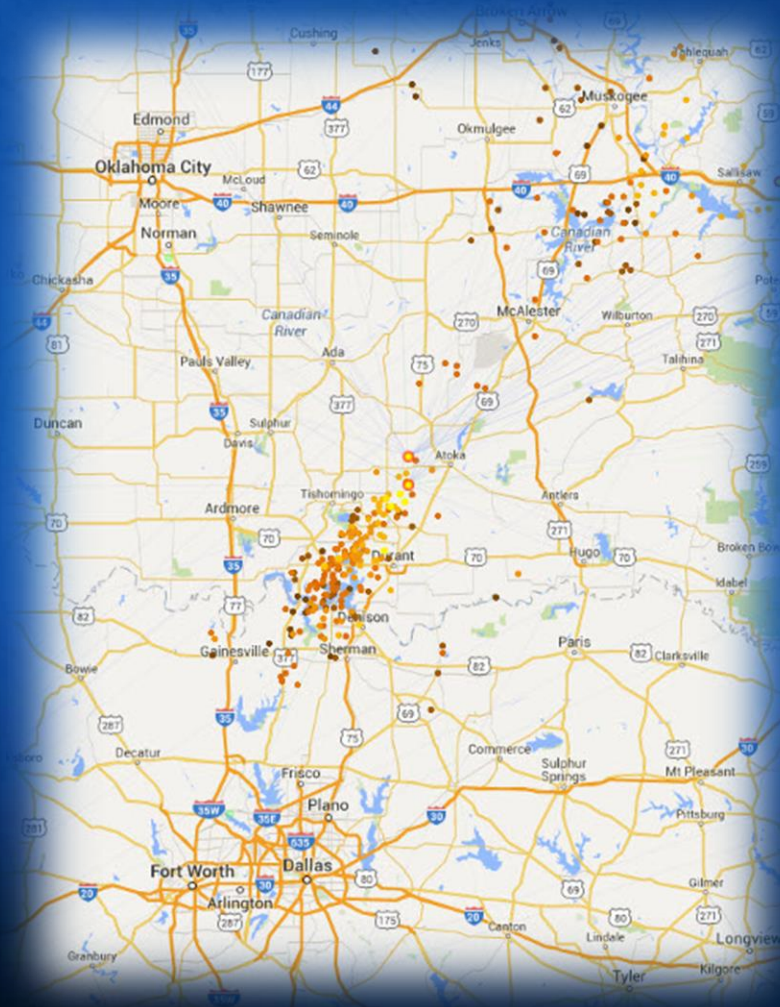
K7PW...A World Class Station

10Khz Lighting Antenna (Blitzortung Network)



K7PW...A World Class Station

10Khz Lightning Detection & Data Transfer to Blitzortung Server
(Map is painted within 2-4 seconds of a strike)



K7PW...A World Class Station

“The Room”

An office, an amateur radio station, audio visual studio, 8mm film restoration/conversion, a telecom center and web server.



K7PW...A World Class Station

Remnants of my home office prior to retirement.



K7PW...A World Class Station

Station operating center. Commissioned as W5RPQ in 1987 and in 1997 replaced with vanity call sign, K7PW



K7PW...A World Class Station

Multi-Media Area



K7PW...A World Class Station

Audio Video processing center and 8mm
film restoration and scanning lab.



K7PW...A World Class Station

Audio-Visual capturing and processing
devices



K7PW...A World Class Station

Data and Telecom Area (Texmark Web Server, data switch, IP telephone service and a small work bench)



K7PW...A World Class Station

Special Memories Wall



Part 2

For Sale

Our home in Flower Mound, TX

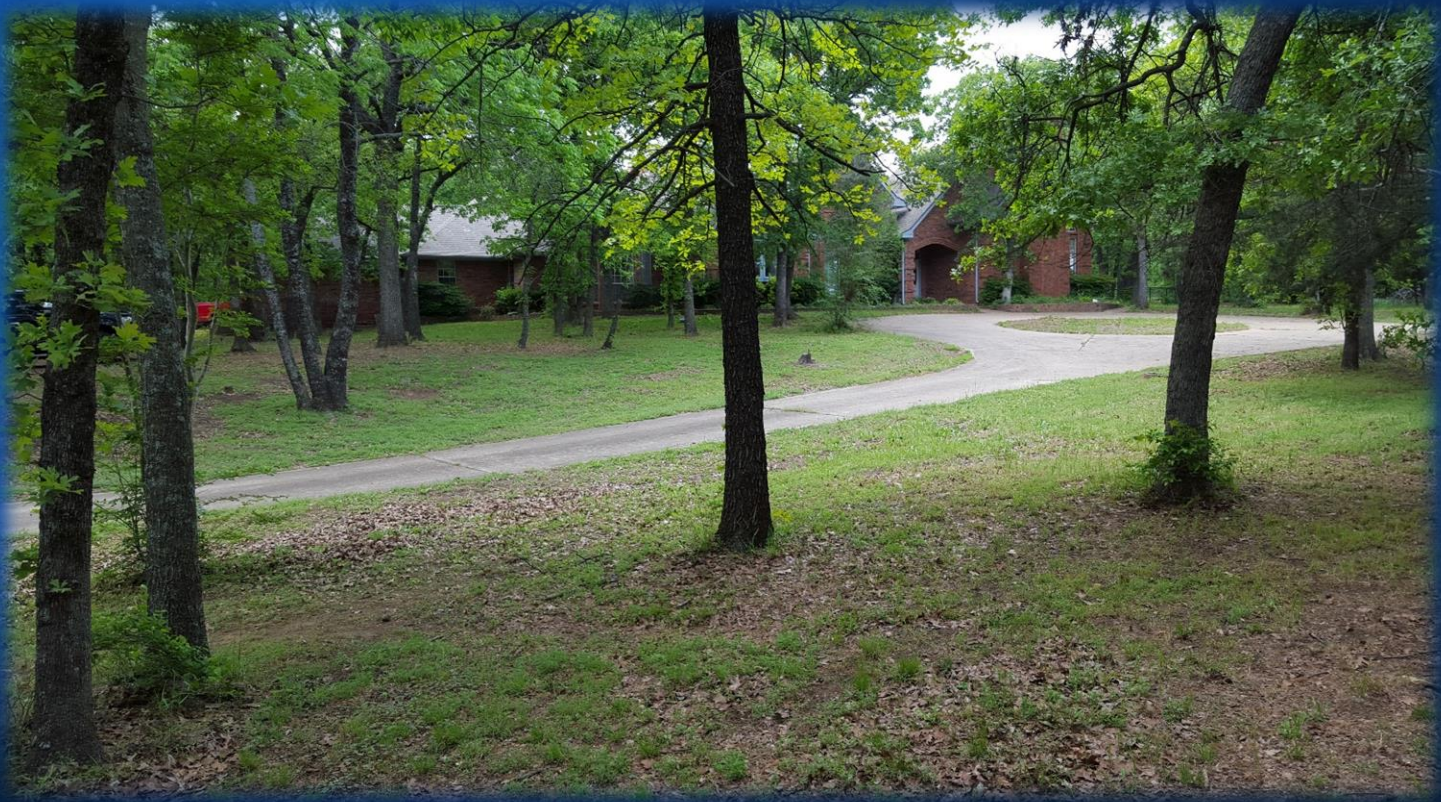
The House is nestled in a heavily wooded 3.8 acre parcel. It has an exceptionally large master bedroom, bath and walk in closet, 2 medium size bedrooms and additional full baths. a large study. The formal living room has it's own fireplace adjacent to a formal dining room. The kitchen is open to an informal dining area, a large den with second fireplace and a sit down wet bar. The 16' x 20' paneled study and closet could be used as a 4th bedroom. And a garage that can easily accommodate 3 cars, a work space and storage.

There is also a 900 Sq ft 2 bedroom / full bath guest house with a complete kitchen over a 900 Sq ft finished shop with wall to wall cabinets, sink, workbench and partitioned area for a hobby room.

To be listed in early to mid-May

Part 2

The House (Front)



Part 2

The House (Front)



Part 2

The House (North Side)



Part 2

The House (Back Yard)



Part 2

The House (Back Yard)



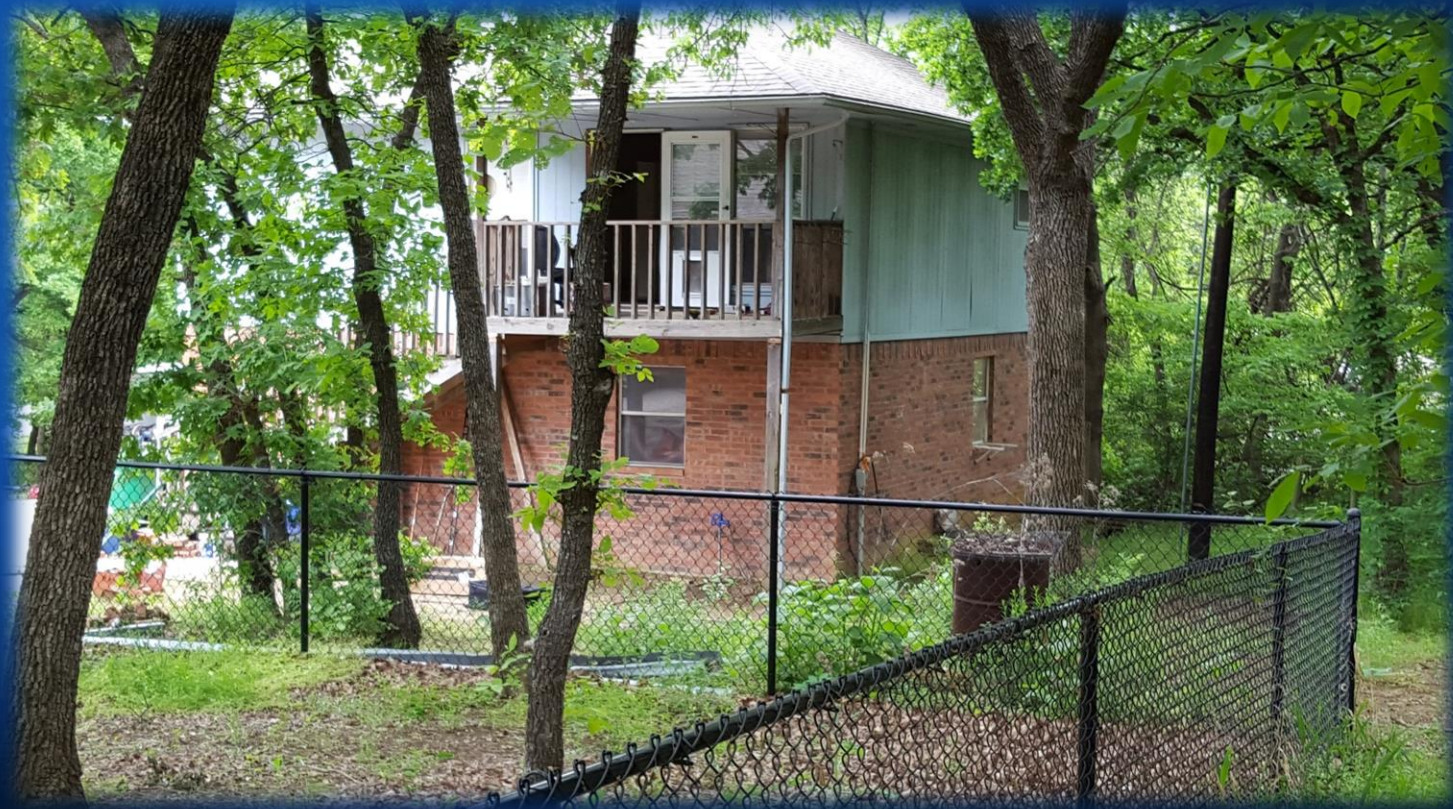
Part 2

The House (Inside)

Pictures coming soon

Part 2

The Guest House/Shop (Outside)



Part 2

The Guest House/Shop (Outside)



Part 2

The Guest House/Shop (Outside)



Part 2

The Guest House/Shop (Inside)



Part 2

The Guest House/Shop (Inside)



Part 2

The Guest House/Shop (Clean Room)



Part 3

The Acreage (Hike to Corp of Engineering Land)



150' East of House

Part 3

The Acreage (Hike to Corp of Engineering Land)



275' East of House

Part 3

The Acreage (Hike to Corp of Engineering Land)



315' East of House
Old Mobile Home Pad over a Storm Shelter

Part 3

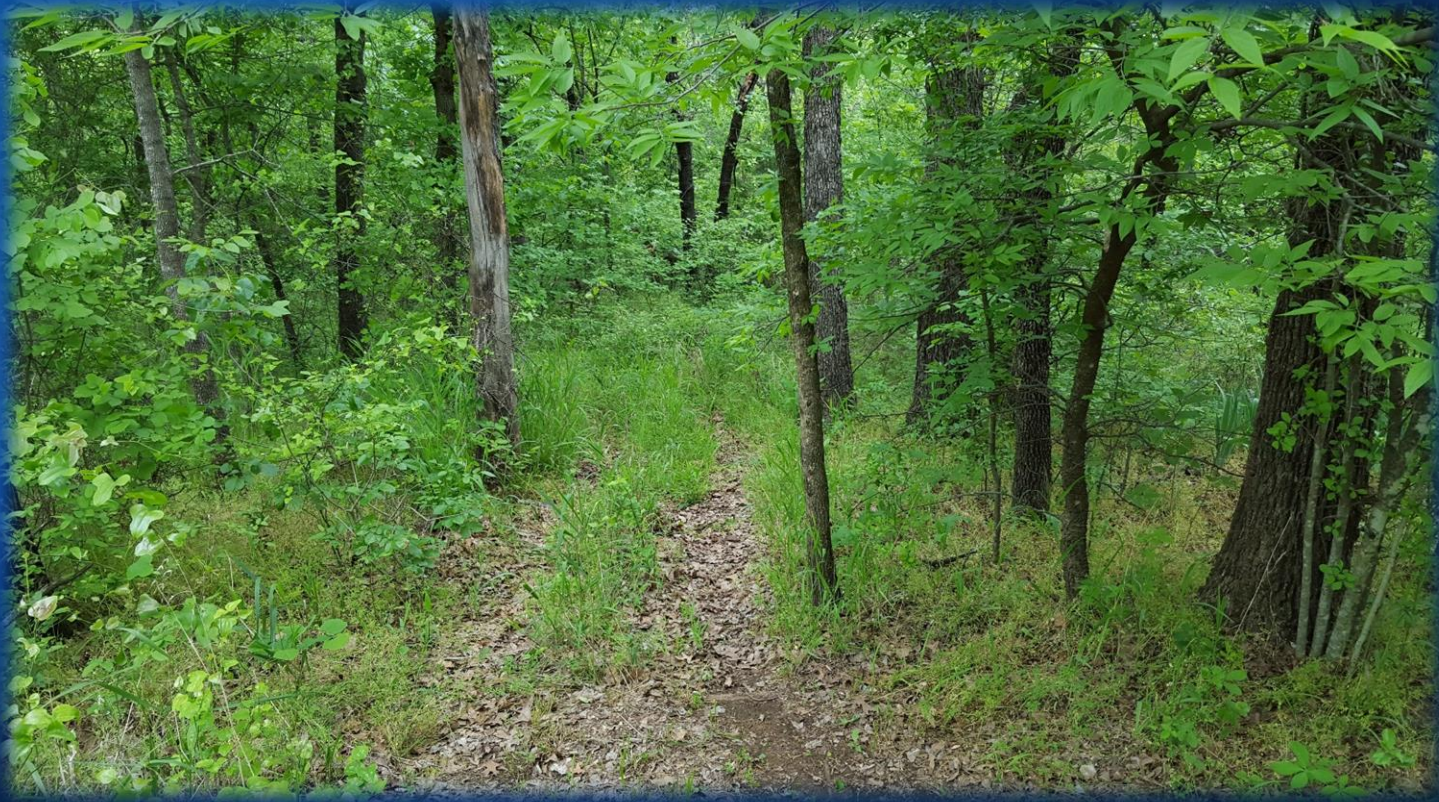
The Acreage (Hike to Corp of Engineering Land)



Storm shelter has been mostly used for storing race car parts.

Part 3

The Acreage (Hike to Corp of Engineering Land)



355' East of House
Top of Trail

Part 3

The Acreage (Hike to Corp of Engineering Land)



410' East of House
Border of Corp Land

Part 3

The Acreage (Hike to Corp of Engineering Land)



Hiking trail to Grapevine Lake

Part 3

The Acreage (Hike to Corp of Engineering Land)



Creek along the Grapevine Trail flows year round. When the lake crests at the dam, it is 20+ft deep an 30+ ft wide and fully navigable.